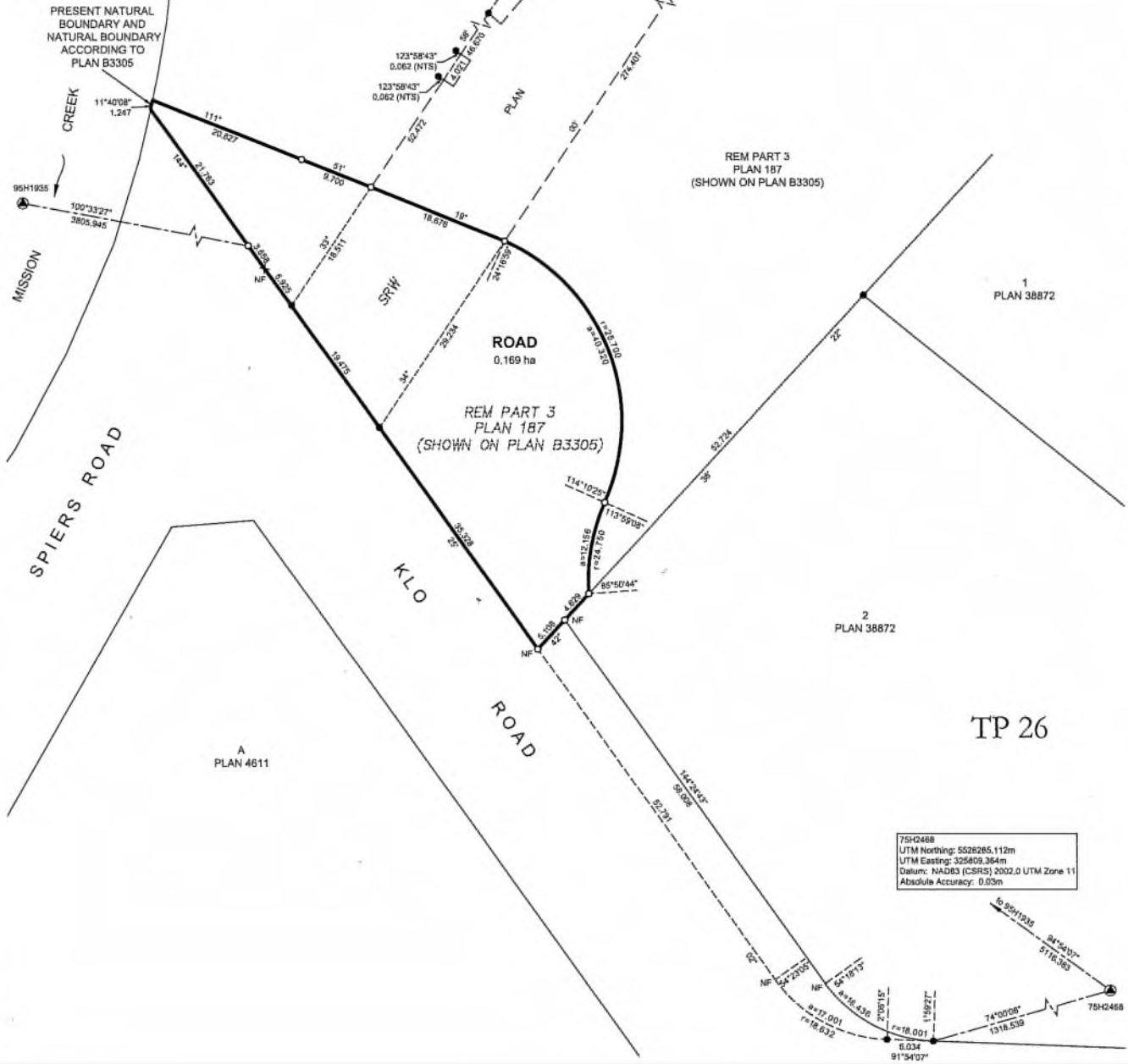




95H1935
 UTM Northing: 5526722.287m
 UTM Easting: 320712.073m
 Datum: NAD83 (CSRS) 2002.0 UTM Zone 11
 Absolute Accuracy: 0.03m

SEC 16



MISSION CREEK

SPIERS ROAD

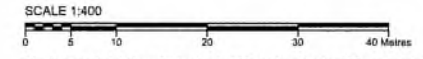
ROAD
 0.169 ha

A
 PLAN 4611

TP 26

75H2468
 UTM Northing: 5528265.112m
 UTM Easting: 325809.364m
 Datum: NAD83 (CSRS) 2002.0 UTM Zone 11
 Absolute Accuracy: 0.03m

REFERENCE PLAN OF THAT PART
 OF LOT 3 SHOWN ON PLAN B3305;
 SECTION 16 TOWNSHIP 26
 OSOYOOS DIVISION YALE
 DISTRICT PLAN 187 EXCEPT
 PLANS 4611, 23703 AND 24182
 PURSUANT TO SECTION 107 OF THE LAND TITLE ACT
 BCGS 82E.083



The intended plot size of this plan is 560mm in width by 432mm in height (C size) when plotted at a scale of 1:400.

LEGEND

- Found Standard Iron Post
- Placed Standard Iron Post
- ⊗ Found Control Monument
- ✕ Not Found
- NTS Not to Scale

Integrated Survey Area No. 4, City of Kelowna NAD83 (CSRS) 2002.0
 Grid bearings are derived from GNSS observations and are referred to the central meridian of UTM Zone 11 (117° West Longitude).
 The UTM coordinates and estimated absolute accuracy achieved are derived from dual frequency GNSS observations to CANNET Active Control Station BC_Kelowna.
 The coordinates and absolute accuracies shown on this plan are a result of an independent and accurate GNSS survey and do not represent official published coordinates.

This plan shows horizontal ground-level distances, unless otherwise specified. To compute grid distances, multiply ground-level distance by the average combined factor of 0.999926. The average combined factor has been determined based on an ellipsoidal elevation of 342 metres.
 This plan lies within the Regional District of Central Okanagan.
 This plan lies partly within the Agricultural Land Reserve.
 This plan lies within the jurisdiction of the Approving Officer for the City of Kelowna.
 The field survey represented by this plan was completed on the 21st day of August, 2024.
 Alexander Christian Dzielski, BCLS 1035

VECTOR
 GEOMATICS LAND SURVEYING LTD.
 111-910 Clement Ave
 Kelowna, B.C. V1Y 0J7
 Ph.: (250) 868-0172
 www.vectorgeomatics.com
 FILE No.: 2301886RD Date: 2024-09-02 Drafted by: CM
 DRAWING No.: 2301888 EPP128984 REF RD